



# **S** series **FD9391-EHTV** Fixed Dome Network Camera



8MP 30fps • 2MP 120fps • SNV • WDR Pro •  
Smart Stream III • 50M IR • IP67 • IK10 • NEMA 4X

The FD9391-EHTV is the new flagship outdoor dome network camera from VIVOTEK, equipped with a 4K ultra HD sensor capable of 3840 x 2160 resolution at 30 fps. With the latest in VIVOTEK WDR Pro technology, the FD9391-EHTV is capable of capturing the highest quality images in high contrast environments.

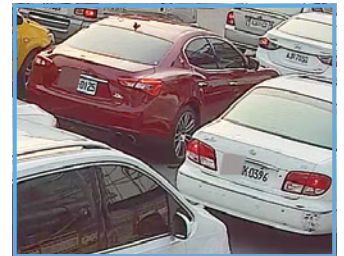
The FD9391-EHTV also supports standard 1920x1080 HD resolution at 120 frames per second, capable of catching very fast moving objects. Additionally, the FD9391-EHTV employs VIVOTEK's Smart

Stream III technology and H.265 compression codec, reducing bandwidth more than 90%\* while still maintaining excellent image quality. Protecting all these features is the FD9391-EHTV's IP66, IP67, IK10 and NEMA 4X certified housing, capable of operating in temperatures from -50°C to 60°C.

\* Depending on the scene

## Key Features

- H.265 Compression Technology
- 30 fps @ 3840x2160 (WDR Pro on)
- 120 fps @ 1920x1080 (WDR Pro off)
- Smart Stream III to Optimize Bandwidth Efficiency
- Built-in IR Illuminators, Effective up to 50 Meters
- Smart IR II Technology to Avoid Overexposure
- WDR Pro for Unparalleled Visibility in Extremely Bright and Dark Environments
- SNV (Supreme Night Visibility) for Low Light Conditions
- Weather-proof IP66/IP67, Vandal-proof IK10 and NEMA 4X-rated Housing
- -50°C ~ 60°C Wide Temperature Range for Extreme Weather Conditions (IR Off)
- Trend Micro IoT Security
- Smart Motion Detection to Reduce False Alarms



2MP Resolution

4K Resolution

## Technical Specifications

Model	FD9391-EHTV	<b>Audio</b>	
<b>System Information</b>		Audio Capability	Two-Way Audio (full duplex)
CPU	Multimedia SoC (System-on-Chip)	Compression	G.711, G.726
Flash	128MB	Interface	Built-in microphone External microphone input External line output
RAM	1GB	<b>Network</b>	
<b>Camera Features</b>		Users	Live viewing for up to 10 clients
Image Sensor	1/2" Progressive CMOS	Protocols	802.1X, ARP, Bonjour, CIFS/SMB, CoS, DDNS, DHCP, DNS, FTP, HTTP, HTTPS, ICMP, IGMP, IPv4, IPv6, NTP, PPPoE, QoS, RTSP/RTP/RTCP, SMTP, SNMP, SSL, TCP/IP, TLS, UDP, UPnP
Max. Resolution	3840x2160	Interface	10 Base-T/100 Base-TX Ethernet /1000 Base-T (RJ-45) *It is highly recommended to use standard CAT5e & CAT6 cables which are compliant with the 3P/ETL standard.
Lens Type	Motorized, Vari-focal, Remote Focus	ONVIF	Supported, specification available at <a href="http://www.onvif.org">www.onvif.org</a>
Focal Length	f = 3.9 ~ 10 mm	<b>Solution Integration</b>	
Aperture	F1.5 ~ F2.7	Smart Motion Detection	Five-window video motion detection, people detection, time filter
Iris type	P-iris	Smart VCA	Intrusion detection, loitering detection, line crossing detection, unattended object detection, missing object detection, face detection *Please access <a href="https://license.vivotek.com/">https://license.vivotek.com/</a> to get the free trial license.
Field of View	45° ~ 119° (Horizontal) 25° ~ 63° (Vertical) 52° ~ 142° (Diagonal)	VADP Package	Deep Learning VCA (Smart Motion Detection, Smart VCA), Trend Micro IoT Security
Shutter Time	1/5 sec. to 1/32,000 sec.	<b>Alarm and Event</b>	
WDR Technology	WDR Pro	Alarm Triggers	Motion detection, manual trigger, digital input, periodical trigger, system boot, recording notification, camera tampering detection, audio detection, shock detection, SD card life expectancy, cybersecurity events (brute force attack event, cyberattack event, quarantine event)
Minimum Illumination	0.02 Lux @ F1.5 (Color) 0.01 Lux @ F1.5 (B/W) 0 Lux with IR illumination on	Alarm Events	Event notification via audio clip, digital output, email, HTTP, FTP, NAS server, SD card File upload via email, HTTP, FTP, NAS server, SD card
Day/Night	Yes	<b>General</b>	
Removable IR-cut Filter	Yes	Connectors	RJ-45 cable connector for Network 10/100/1000 Mbps PoE connection*1 Audio input*1 Audio output*1 DC 12V power input*1 AC 24V power input *1 Digital input*1 Digital output*1
Pan Range	353°	LED Indicator	System power and status indicator
Tilt Range	80°	Power Input	IEEE 802.3at Class4 PoE DC 12V AC 24V Power redundancy
Rotation Range	180°		
Pan/Tilt/Zoom Functionalities	ePTZ: 48x digital zoom (4x on IE plug-in, 12x built in)		
IR Illuminators	Built-in IR Illuminators up to 50 meters with Smart IR II		
On-board Storage	Slot type: MicroSD/SDHC/SDXC card slot Seamless Recording		
<b>Video</b>			
Compression	H265, H264, MJPEG		
Maximum Frame Rate	30 fps @ 3840x2160 (WDR Pro on) 120 fps @ 1920x1080 (WDR Pro off)		
Maximum Streams	3 simultaneous streams		
S/N Ratio	60.5 dB		
Dynamic Range	120 dB		
Video Streaming	Adjustable resolution, quality and bit rate control, Smart Stream III		
Image Settings	Adjustable image size, quality and bit rate; Time stamp, text overlay, flip & mirror; configurable brightness, contrast, saturation, sharpness, white balance, exposure control, gain, backlight compensation, privacy masks; scheduled profile settings, defog, 3DNR, video rotation, AE speed, DIS, HLC, deblur, metering		

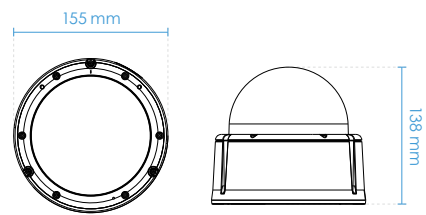
## Technical Specifications

Power Consumption	PoE: Max. 24.8 W DC 12V: Max. 21 W AC 24V: Max. 23.4 W
Dimensions	Ø 155 x 138 mm
Weight	1,306 g
Casing	IP66, IP67, IK10, NEMA 4X
Safety Certifications	CE, FCC Class A, VCCI, C-tick, UL, BIS
Operating Temperature	Starting Temperature: -40°C ~ 60°C (-40°F ~ 140°F) Working Temperature (IR off): -50°C ~ 60°C (-58°F ~ 140°F) Working Temperature (IR on): -50°C ~ 50°C (-58°F ~ 122°F)
Humidity	90%
Warranty	36 months

### System Requirements





Operating System	Microsoft Windows 8/7 Mac 10.12 (Chrome only)
Web Browser	Chrome 58.0 or above Internet Explorer 10/11
Other Players	VLC: 1.1.11 or above
<b>Included Accessories</b>	
Others	Quick installation guide, warranty card, alignment sticker, screw pack, conduit ring, desiccant bag, waterproof accessory bag

### Dimensions



## Compatible Accessories

### Mounting Kits

 <p>AM-21A L-shape Bracket</p>	 <p>AM-51C Adapting Plate</p>	 <p>AM-525 Mounting Adapter</p>	 <p>AM-713(v01) Outdoor Conduit Box</p>
---	--	---	--